



## Marlee Float™ Skimmer Maintenance Recommendations

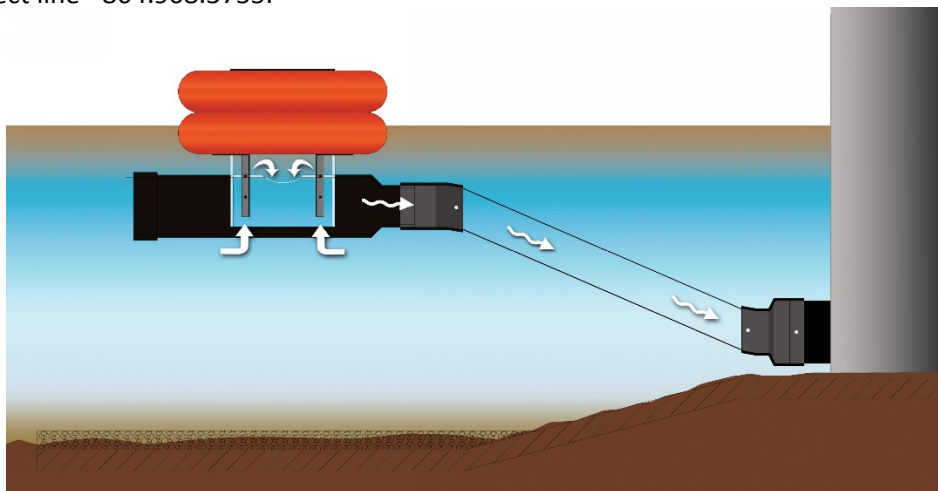
### For Skimmers Used During Construction or Temporary Use

- Inspect the sediment basin and skimmer weekly and after each rainfall event of 1/2" or more
- As necessary, remove trash and debris from skimmer orifice opening
- Confirm that screws are installed at each coupling to prevent twisting. Screws should be no longer than 1" in length.
- Inspect the rubber couplings monthly for wear or damage. Tighten pipe clamps as needed. If couplings are damaged contact manufacturer for replacements.
- Inspect the rigid pipe connecting the skimmer to the outlet structure monthly for cracks and to insure it is not covered in sediment or debris that would restrict the skimmer from floating.

### For Skimmers Used as Part of the Permanent Post Construction Outlet Structure System

- Inspect the detention basin and skimmer monthly and after each rainfall event of 1/2" or more
- As necessary, remove trash and debris from skimmer orifice opening
- Confirm that screws are installed at each coupling to prevent twisting. Screws should be no longer than 1" in length.
- Inspect the rubber couplings every six months for wear or damage. Tighten pipe clamps as needed. If couplings are damaged contact manufacturer for replacements.
- Inspect the rigid pipe connecting the skimmer to the outlet structure every six months for cracks and to insure it is not covered in sediment or debris that would restrict the skimmer from floating. Note that for permanent use it is recommend to use UV-resistant PVC or HDPE pipe.
- Inspect maintenance rope and replace if worn or rotting.

For technical information assistance, please contact Jamie McCutchen at [jamie@SWProductsUS.com](mailto:jamie@SWProductsUS.com) or cell - 864.918.3676 or direct line - 864.908.3755.



803 Roper Creek Drive • Greenville, SC 29615

855-697-9333 • [SWProductsUS.com](http://SWProductsUS.com)